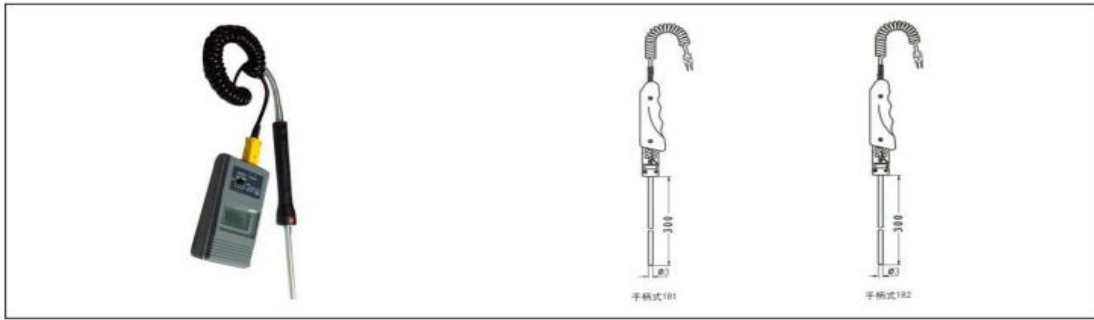
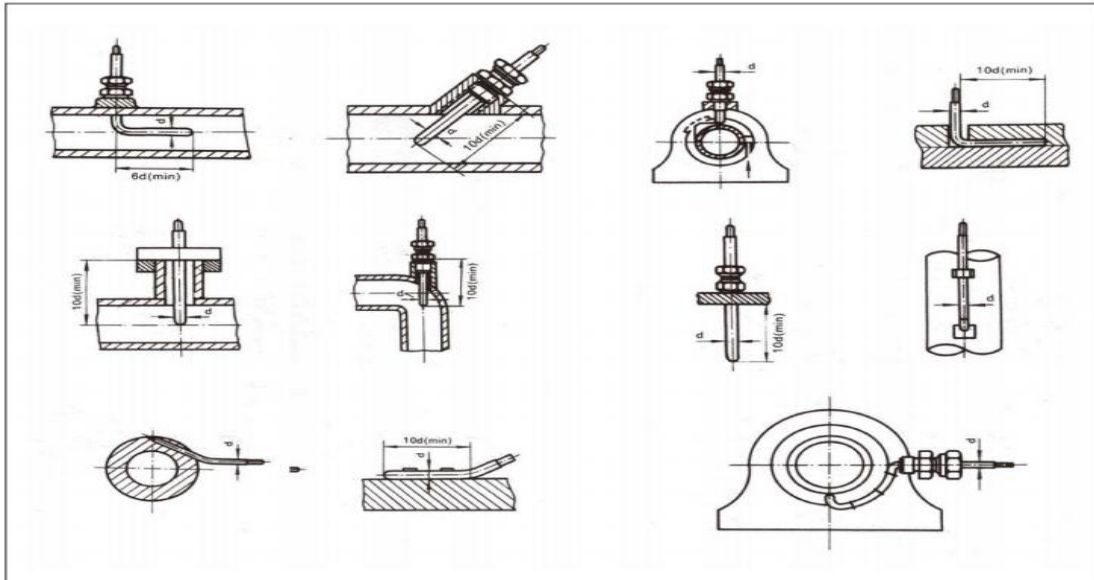


手柄式铠装热电偶 Handle type armoured thermocouple



名称 Name	型号 Model	分度号 Graduation	外径 Outer diameter	长度 Length	工作端形式 Form in the working terminal
镍铬硅-镍硅 Nichrome-nickel silicon	WRMK-181	N	φ3-φ8	300-3000	绝缘式 Insulating type
镍铬-镍硅 Nickel chromium-nickel silicon	WRNK-181	K			
镍铬-铜镍 Nickel chromium-nickel copper	WREK-181	E			
铜-铜镍 Copper-copper Nickel	WRCK-181	T			
铁-铜镍 Iron-copper nickel	WRFK-181	J			
镍铬硅-镍硅 Nichrome-nickel silicon	WRMK-182	N			接壳式 Shell type
镍铬-镍硅 Nickel chromium-nickel silicon	WRNK-182	K			
镍铬-铜镍 Nickel chromium-nickel copper	WREK-182	E			
铜-铜镍 Copper-copper Nickel	WRCK-182	T			
铁-铜镍 Iron-copper nickel	WRFK-182	J			

安装形式 Installation form



选型须知 Notice for model selection

型号
分度号
精度等级
安装固定形式
保护管材质
长度或插入长度

例：铠装热电偶，K型，I级，固定卡套螺纹，保护管GH3030，长度450mm，插入长度300mm，WRNK-231，LxI=450x300，I级保护管GH3030。

Model
Graduation
Precision grade
Installation and fixation form
Material for the protective tube
Length or insertion length

For example: in terms of the sheathed thermocouple, K model, I grade, fixed-sleeve screw, protective tube GH3030, length 450mm, insertion length: 300mm, WRNK-231, Lx I=450x 300, the protective tube of I grade GH3030.